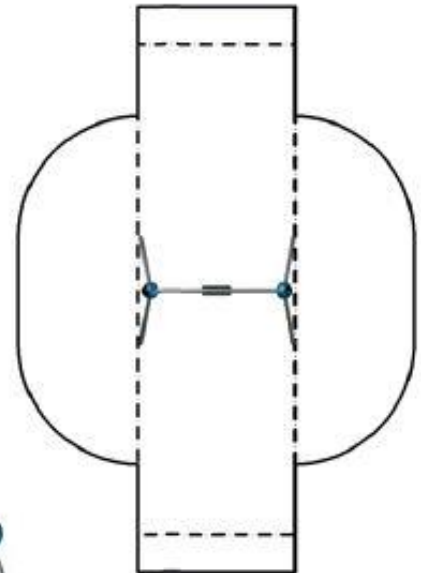


Swingo.2.1 – Product Specification



Swingo.2.1

The small one-seater-swing features the new organic UDB-design. A modern day swing doesn't have to be made from two A-frames and a horizontal beam.



Swingo.2.1 – at a glance.

Product Family:	Playpoints	Number of Foundations:	4 pc.
Item Number:	90.260.501	Concrete Volume C20/C25:	0.6 m³ (21.2 ft³)
Children's Age:	3+	Number of skilled installers required:	2
Fall Height (DIN EN 1176):	1.3 m (4'-4")	Installation Time without foundation:	2 hours
Length x Width x Height:	2.5 m x 1.7 m x 2.3 m (8'-3" x 5'-7" x 7'-7")	Dimensions of largest part:	2.9 m x 0.9 m x 0.1 m (9'-7" x 3'-0" x 0'-4")
Protective Surfacing Area (DIN EN 1176):	7.6 m x 2.5 m	Weight of the heaviest part:	20 kg (45 lbs)
Protective Surfacing Area (ASTM 1487):	8.7 m x 6.1 m (28'-7" x 20'-1")	Shipping Volume:	1.3 m³ (46 ft³)
Minimum space required DIN EN 1176:	18.1 m²	Shipping Weight:	120 kg (265 lbs)
Minimum space required ASTM 1487:	37.5 m² (404 ft²)	Spare part guarantee:	Lifelong
		Certificate according to DIN EN 1176:	No.: Z2 15 06 10256 231 TÜV Product Service

Technical Data.

The following text can also be used for tenders.

Framework:

Stainless steel tube bends Ø 60.3 mm (2 3/8"), connected to Frameworx®-aluminum ball connectors; Ø 250 mm (9-13/16"); anti-corrosion treatment and color finish: sandblasting and solvent-free zinc-/ epoxy-/ polyester-process; securely closed with durable EPDM-caps

Swing seat:

The black rubber safety swing seat is by stainless steel chains rotatable mounted to the cross tube mounted in maintenance free nylon bushes


Berliner
Berliner Seilfabrik GmbH & Co.
Lengeder Straße 2/4
D-13407 Berlin

Tel. +49.(0)30.41 47 24-0
Fax +49.(0)30.41 47 24-33

info@berliner-seilfabrik.com
www.berliner-seilfabrik.com

