



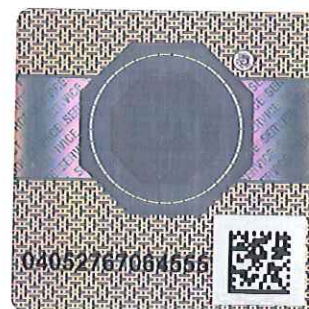
Product Service

CERTIFICATE

No. Z2 15 06 10256 232

Holder of Certificate: Berliner Seilfabrik GmbH & Co.Lengeder Straße 4
13407 Berlin
GERMANY**Certification Mark:****Product:** Climbing equipment

The product was tested on a voluntary basis and complies with the essential requirements. The certification mark shown above can be affixed on the product. It is not permitted to alter the certification mark in any way. In addition the certification holder must not transfer the certificate to third parties. See also notes overleaf.

Test report no.: 713056178-02**Valid until:** 2020-06-07**Date,** 2015-06-18
Page 1 of 2
(Jens Biesenack)

**CERTIFICATE****No. Z2 15 06 10256 232****Model(s):****Series Playpoints:****White Water.02; White Water.03; White Water.04;
Spirelli.01; Spirelli.02;
Cherry.100; Cherry.140;****Parameters:**White Water devices consist of wave-like stainless steel pipes for mounting on a slope.
Length of the devices: 3.8 m
Max. fall height: 0.6 mWhite Water.02: Device consist of 2 parallel pipes,
Security area: 6.8 x 3.9 m
White Water.03: Device consist of 3 parallel pipes.
Security area: 6.8 x 4.2 m
White Water.04: Device consist of 4 parallel pipes.
Security area: 6.8 x 4.6 m

Spirelli climbing equipment consist of a bent stainless steel pipe:

Spirelli.01:
L x W x H: 2.9 x 2.9 x 0.3 m,
Security area: 3.3 x 3.3 m,
Max. fall height: 1.5 mSpirelli.02:
L x W x H: 1.8 x 0.5 x 1.4 m,
Security area: 4.8 x 3.5 m,
Max. fall height: 1.4 mCherry climbing equipment consists of a vertical pipe and a circular stainless steel pipe.
Security area: 3.9 x 3.2 mCherry.100:
L x W x H: 1.0 x 0.2 x 1.9 m,
Max. fall height: 1.0 mCherry.140:
L x W x H: 1.0 x 0.2 x 2.3 m,
Max. fall height: 1.4 m**Tested according to:**DIN EN 1176-1:2008
EN 1176-1:2008**Production Facility(ies):**

10256

Page 2 of 2